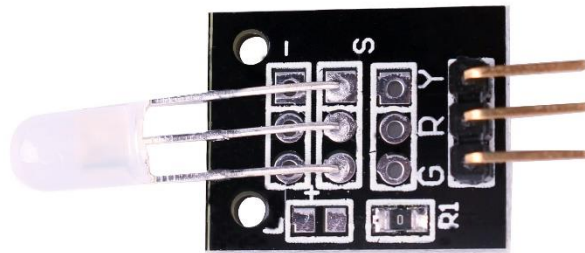


---

## Two Color LED Module(5mm)

### DESCRIPTION:

It will gradually generate two kinds of color (Red and Green) from one to another. The difference is the diameter of the LED is 5mm. The "R" pin represents red color and the "Y" pin stands for Green color.



### Specification:

- Color: Green + Red
- Diameter: 5mm
- Case Color: None
- Package Type: Diffusion
- Voltage (V): G :2.3-2.6 V; R :1.9-2.2 V
- Using a current (MA): 20
- Viewing angle: Wavelength (NM): 571 +625
- Luminous intensity (MCD) :20-40; 60-80
- Stent type: long-legged

---

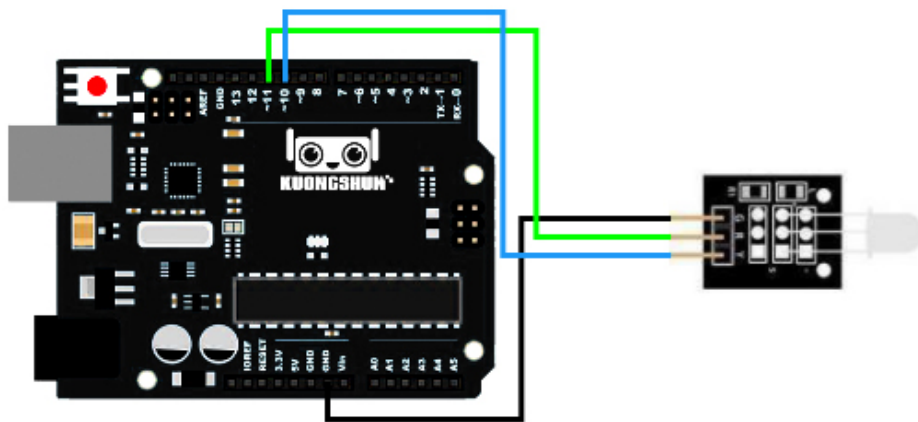
## PIN CONFIGURATION:

- 1、 “G” : GND
- 2、 “R” : Red color pin
- 3、 “Y” : Green color pin

## Example:

Here is a example show that the color of the LED gradually change to Green from Red.

The connection as below:



## Code:

```
int redpin = 11;  // select the pin for the red LED
int greenpin = 10; // select the pin for the greenLED
int val;
void setup () {
  pinMode (redpin, OUTPUT);
  pinMode (greenpin, OUTPUT);
  Serial.begin (9600);
}
```

---

```
void loop ()
{
  for (val = 255; val > 0; val --)
  {
    analogWrite (11, val);

    analogWrite (10, 255-val);
    delay (15);
  }
  for (val = 0; val < 255; val ++ )
  {
    analogWrite (11, val);
    analogWrite (10, 255-val);
    delay (15);
  }
  Serial.println (val, DEC);
}
```