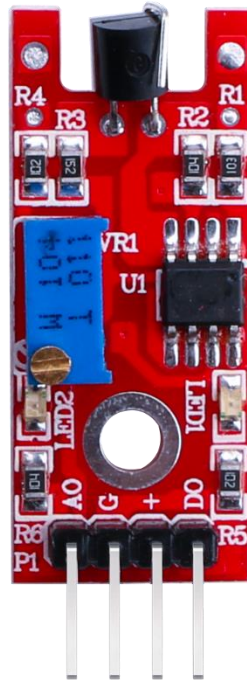

Touch Sensor

DESCRIPTION:

This module is a metal touch sensor, it looks like (flame sensor module), has 4 pin, including one analog pin and digital pin, but usually we just use the digital pin. Which can be used to detect whether a human body is touching the metal detector.



Specification:

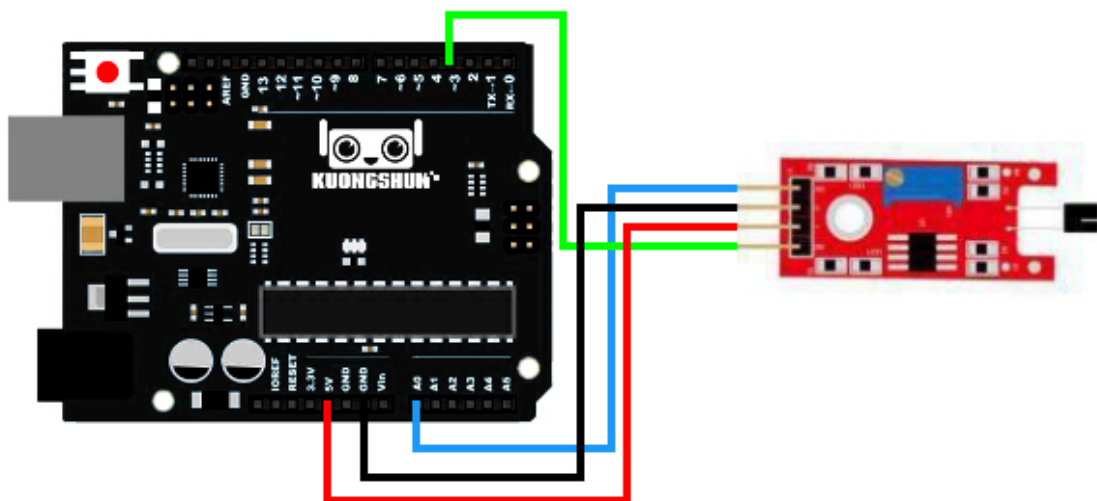
- Operation voltage: 5V
- Both digital and analog output pin
- Adjustable sensitive
- Size: 43.5*15.5mm
- Weight: 3.051g

PIN CONFIGURATION:

- 1、“A0”: Analog output pin, real-time output voltagesignal(usually useless)
- 2、“G”:Ground
- 3、“+”:Power(5V/DC)
- 4、“D0”: Digital output pin, output Low or High signalwhen the human body touch it

Example:

Here is an example show you how to use this module, connection as below. When you touch the metal detector via vour finger. the LED13 turns on.



Code:

```
int Led = 13;// define LED Interface

int Sensor = 3;

int val;// define numeric variables val

void setup ()

{

pinMode (Led, OUTPUT) ;//define LED as output interface
```

```
pinMode (Sensor, INPUT) ;// define metal touch sensor output interface
}

void loop ()
{
val = digitalRead (Sensor) ;//digital interface will be assigned a value of 3
to read val
if (val == HIGH) //When the metal touch sensor detects a signal, LED
flashes
{
digitalWrite (Led, HIGH);
}
else
{
digitalWrite (Led, LOW);
}
}
```