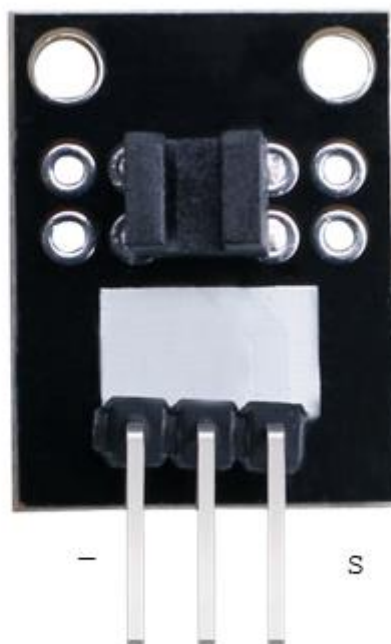

Photo-Interrupter Module

DESCRIPTION:

Photo-interrupter, also called optical broken module, is a device that is made up of an infrared led and a photo transistor with a gap between the two of them. When something is placed between the gap, the light is cut and the current flow through the photo transistor is reduced or stopped.



Specification:

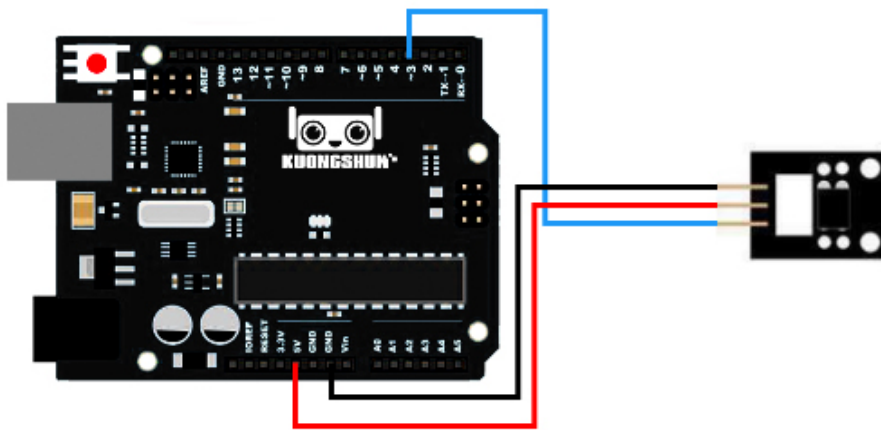
- Operation voltage: 5V
- 3Pin
- Size: 23.5*14.5mm
- Weight: 1.265g

PIN CONFIGURATION:

-
- 1、 “-”: GND
 - 2、 “+” : +5V
 - 3、 “S” : Signal pin

Example:

In this example, connect the circuit as below, upload the sketch, then put something between this module, the LED13 will light on.



Code:

```
int Led=13;
int sensor=3;
int val;
void setup()
{
  pinMode(Led,OUTPUT);
  pinMode(sensor,INPUT);
}
void loop()
```

```
{  
val=digitalRead(sensor);  
if(val==HIGH)  
{  
digitalWrite(Led,HIGH);  
}  
else  
{  
digitalWrite(Led,LOW);  
}  
  
}
```