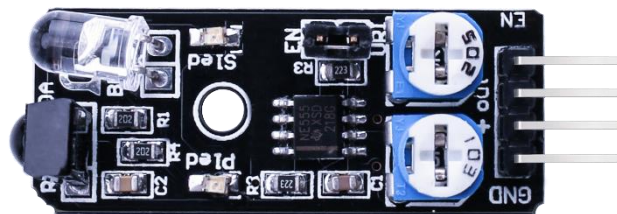

Obstacle Avoidance Sensor

DESCRIPTION:

Infrared obstacle avoidance sensor is designed for the design of a wheeled robot obstacle avoidance sensor distance adjustable. This ambient light sensor adaptable, high precision, having a pair of infrared transmitter and receiver, transmitter tubes emit a certain frequency of infrared, When detecting the direction of an obstacle (reflector), the infrared receiver tube receiver is reflected back, when the indicator is lit, Through the circuit, the signal output interface output digital signal that can be detected by means of potentiometer knob to adjust the distance, the effective distance From 2 ~ 40cm, working voltage of 3.3V- 5V, operating voltage range as broad, relatively large fluctuations in the power supply voltage of the situation Stable condition and still work for a variety of microcontrollers, Arduino controller, BS2 controller, attached to the robot that Can sense changes in their surroundings.



Specification:

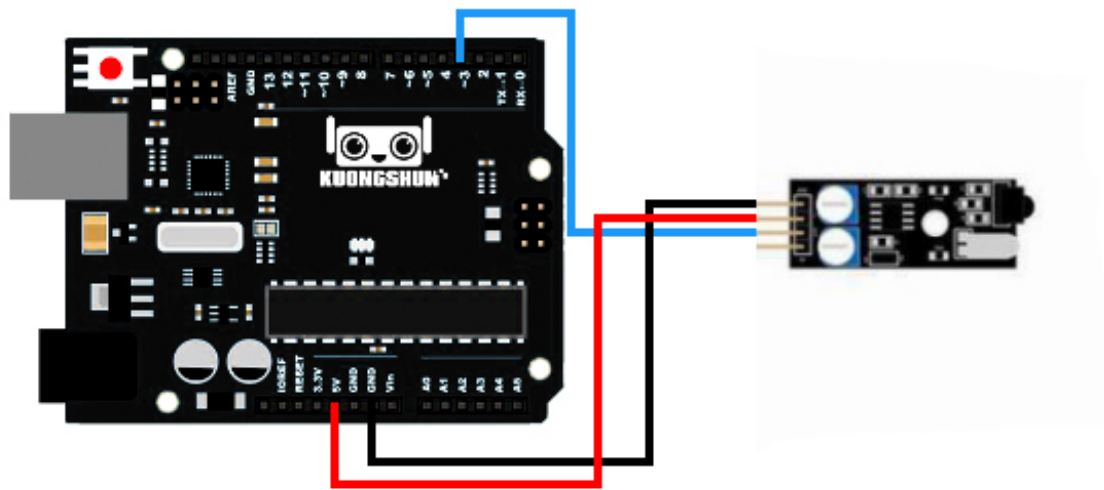
- Working voltage: DC 3.3V-5V
- Working current: $\geq 20\text{mA}$
- Operating temperature: $-10\text{ }^{\circ}\text{C}$ - $+50\text{ }^{\circ}\text{C}$
- detection distance :2-40cm
- IO Interface: 4-wire interfaces (- / + / S / EN)
- Output signal: TTL level (low level there is an obstacle, no obstacle high)
- Adjustment: adjust multi-turn resistance
- Effective angle: 35°
- Size: 46mm \times 17mm

PIN CONFIGURATION:

- 1、 “GND” : GND
- 2、 “OUT”: Signal pin
- 3、 “+” : +5V
- 4、 “EN”: Enable pin that Low level works, usually useless

Example :

Here is a small example to test the sensor. By default, the sensor returns 1 on the Serial



Code:

```
int count;

void setup() {
  Serial.begin (9600);
  pinMode (9, INPUT); //Sensor output
}

void loop()
{
  Serial.print ("Sensor: ");
  Serial.println (digitalRead(9)); //print the sensor output
  delay (500); //wait half a second
}
```

Result:

